

DATA SHEET

MapInfo® Professional v10.0

SAVE TIME, MONEY, AND RESOURCES WITH THE PREMIER LOCATION INTELLIGENCE SOLUTION.



Summary

MapInfo Professional v10.0 is an industry leading location intelligence desktop solution used for creating, editing, visualizing and analyzing customer and business data in the context of location.

Benefits

- Saves time and resources with a new interface, reducing clicks, clutter, and effort
- Promotes cost efficiency through improved data access
- Supports a wide variety of data types and formats, including PostGIS and Microsoft® SQL Server 2008 databases
- Maximizes investment in Microsoft Office®
- Produces better looking maps to facilitate strategic planning efforts
- Provides easier access to proportion overlap capabilities, as well as increased performance

OVERVIEW

MapInfo Professional v10.0, the powerful new release of Pitney Bowes Business Insight's leading desktop mapping application, represents a new standard of usability in location intelligence solutions. MapInfo Professional v10.0 provides an assortment of dynamic new features, including a powerful user interface, enhanced data access, and robust map output capabilities.

Powerful New User Interface

MapInfo Professional v10.0's new flexible user interface not only greatly improves efficiency and organization, but also increases productivity. The new user interface allows users to dock toolbars on all four sides of the application helping to improve efficiency, reduce screen clutter, and save time.

Redesigned Layer Control

MapInfo Professional v10.0 includes a powerful new layer control. This redesigned Layer control, shown as either a floating or docked window that remains visible during the entire mapping session, provides quick and easy access at all times.

Style swatches, label conditions, and text style settings are now easily accessible and included next to each layer, allowing you to change and preview layer settings quickly and easily. By simply clicking the desired

style swatch, the new style override can be set for one or more layers in a single step. The new layer property manipulation process, coupled with the immediate preview capability, results in fewer clicks and improved efficiency.

The redesigned layer control not only allows access to layers in all open maps, but also allows editing to layers in multiple workspaces, simultaneously. By allowing you to view, manipulate, and preview all current map layers, MapInfo Professional v10.0 creates a substantial time savings.

Enhanced Data Access

Data access is essential to any and all analysis. By providing support for the latest industry standards and databases, MapInfo Professional v10.0 enables you to apply the power of location to an unlimited number of data types. New supported data formats include:

PostGIS—Provides full read and write capabilities to the open source PostgreSQL database. Access to the open source database allows users to access, edit, and save PostGIS files to the database through MapInfo Professional.

MapInfo Professional v10.0 satisfies various government mandates requiring PostGIS format support.

MapInfo® Professional v10.0

Microsoft® SQL Server 2008 Spatial Database— Optimizes IT investments by providing both read and write access to Microsoft's® SQL Server 2008 spatial database.

Microsoft® Office 2007— Supports the new file format of both Microsoft® Excel and Microsoft® Access.

Dynamic Map Output

MapInfo Professional v10.0 includes new dynamic elements and map output capabilities, such as a dynamic scalebar and the ability to export maps to layered PDF. The dynamic scale bar automatically adjusts and updates as you zoom, pan, and resize the map window.

Once the desired maps are created, MapInfo Professional v10.0 supports exporting maps to layered PDF format. The layered PDF format allows future access to the various layers of data. This enables specific layers to be turned on or off, depending on the requirement, providing flexibility for the end user.

Can You Afford Not to Be Location Intelligent?

Data is used every day, and across every enterprise, to make critical strategic decisions that positively impact both business and customers.

With MapInfo Professional v10.0, you gain a new perspective and insight into your data through the use of location intelligence. MapInfo Professional v10.0, and its location intelligence capabilities, helps organizations understand their businesses, analyze trends geographically, and make critical decisions with greater clarity of risk and opportunity. Can you really afford not to implement MapInfo Professional v10.0 today?

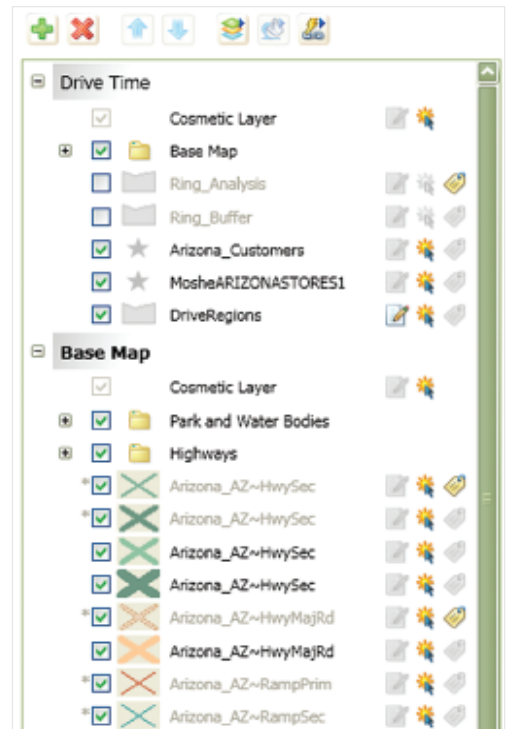
FOR MORE INFORMATION CALL 1.866.874.6277

TSI

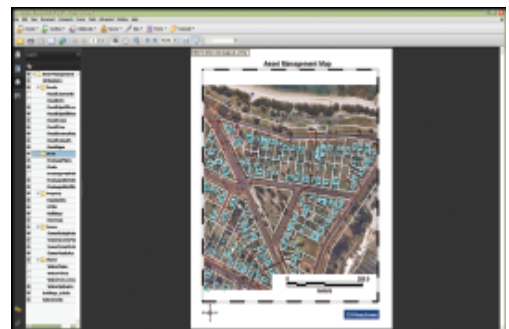
5 Shaw's Cove, Suite 205
New London, CT 06320

main: 860.440.3887
1.866.874.6277
fax: 860.440.3889

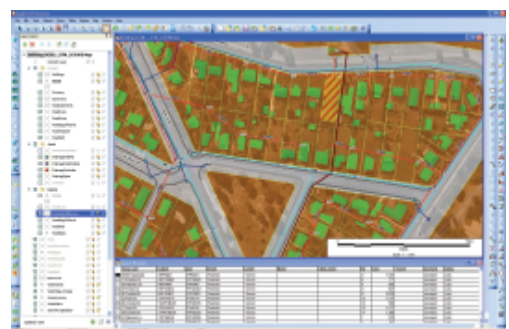
www.tsimapping.com
sales@tsimapping.com



MapInfo Professional v10.0's redesigned, dockable layer control includes quick access to layer properties.



Export your maps to layered PDF—turning specific layers on or off depending on the target audience.



MapInfo Professional v10.0's dockable toolbars provides users a way to organize toolbars, maximizing screen space.

 **Pitney Bowes**
Business Insight